

Walking to the future in my dream feet

Carlos Domínguez
Gonzalo Fernández
Leonardo Quispe

Carlos León
Elena Hidalgo
Luisa Recio

Key points

Sustainability

Extraction only needs excavation material.

National Product

Principal extraction areas are Toledo and Almería, Spain.

Health

No damage.



Combustion

Activated carbon is produced releasing tones of CO₂

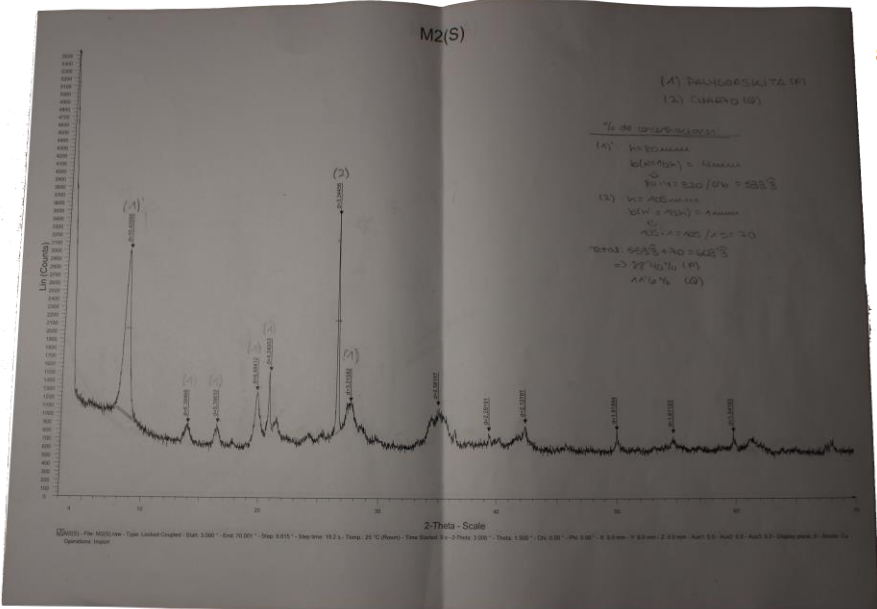
Treatment

Many treatments are required before activated carbon is useful.

Costs

Carbon can be up to 10 times more expensive.

XRD & BET



StarDriver V2.03

Gemini 2360 V5.01

Serial # 853

Page 1

File Name: C:/DOCUME~1/ADMINI~1/ESCRIT~1/STARDVR/DATA/DRYFEE
 Sample ID: M2
 Setup Group: BET 5_pts

Started:
 Completed:
 Report Time: 20/05/2022 9:50:23
 Evac. Rate: 300.0 mmHg/min
 Analysis Mode: Equilibration

Sat. Pressure: 773.22 mmHg
 Meas. Freespace: -0.1465 cm³
 Sample Weight: 0.2186 g
 Evac. Time: 3.000000 minutes
 Equil. Interval: 5 secs

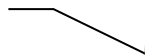
Analysis Log

Relative Pressure	Pressure (mmHg)	Vol Adsorbed (cm ³ /g STP)	Elapsed Time (HR:MN)	Saturation Press. (mmHg)
0.049979310	38.64500	50.3946	905:31	773.21997
0.112471224	86.96500	54.6972	780:36	
0.174859687	135.20500	57.7747	1057:02	
0.237299873	183.48500	60.5857	434:05	
0.299694789	231.73000	63.4121	847:05	

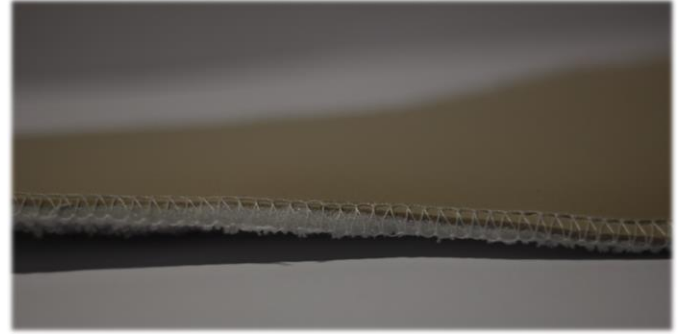
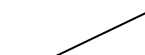
MPV



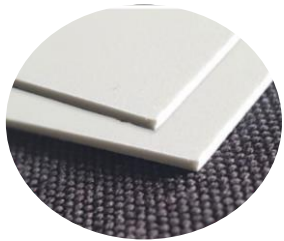
Cotton terry



Polymeric Material



Treated Sponge



Early adopters

1
Living standards

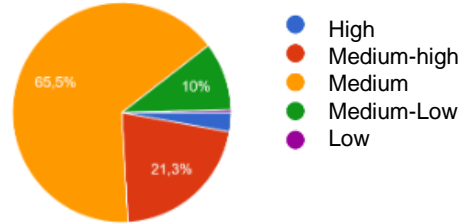


Diagram 1

2
Age

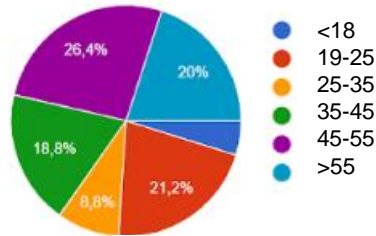


Diagram 2

3
Odour nuisance

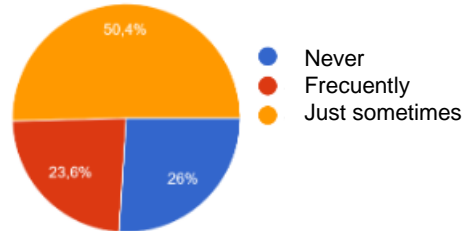
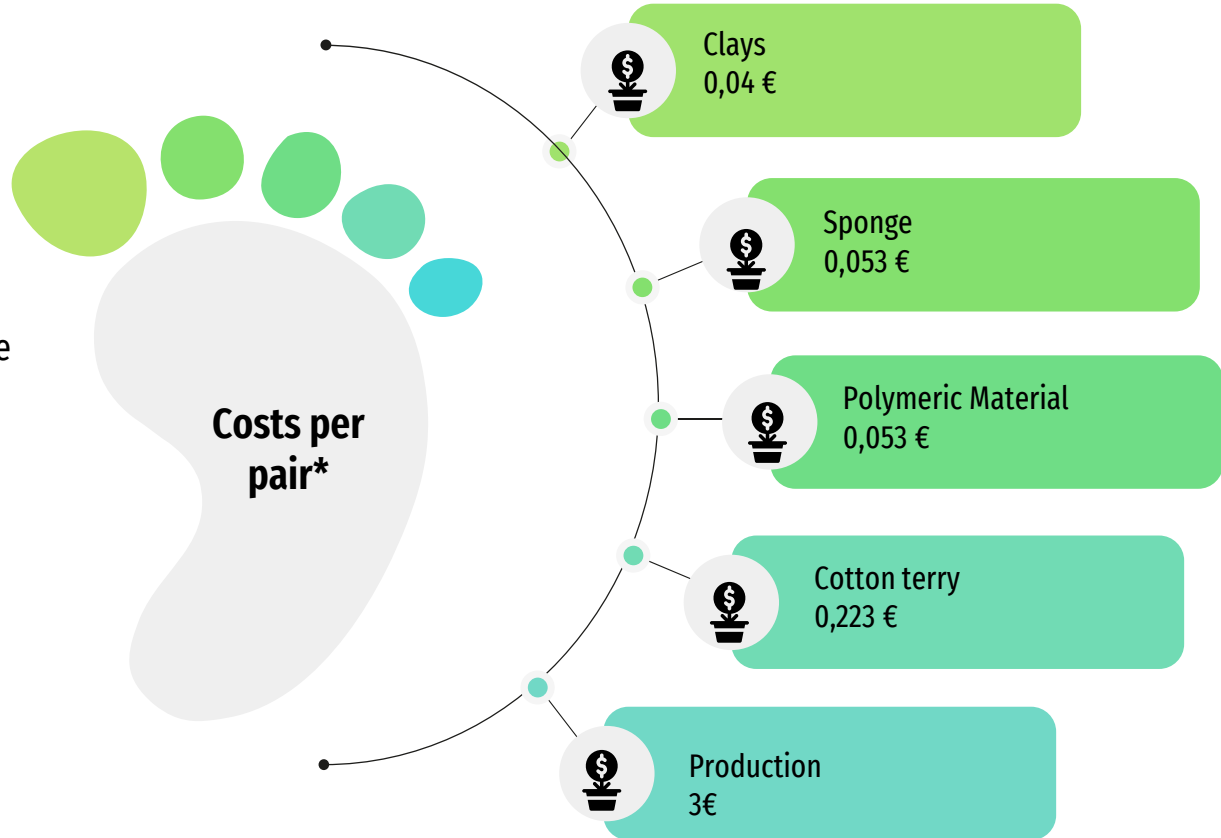


Diagram 3

Recruitment channels



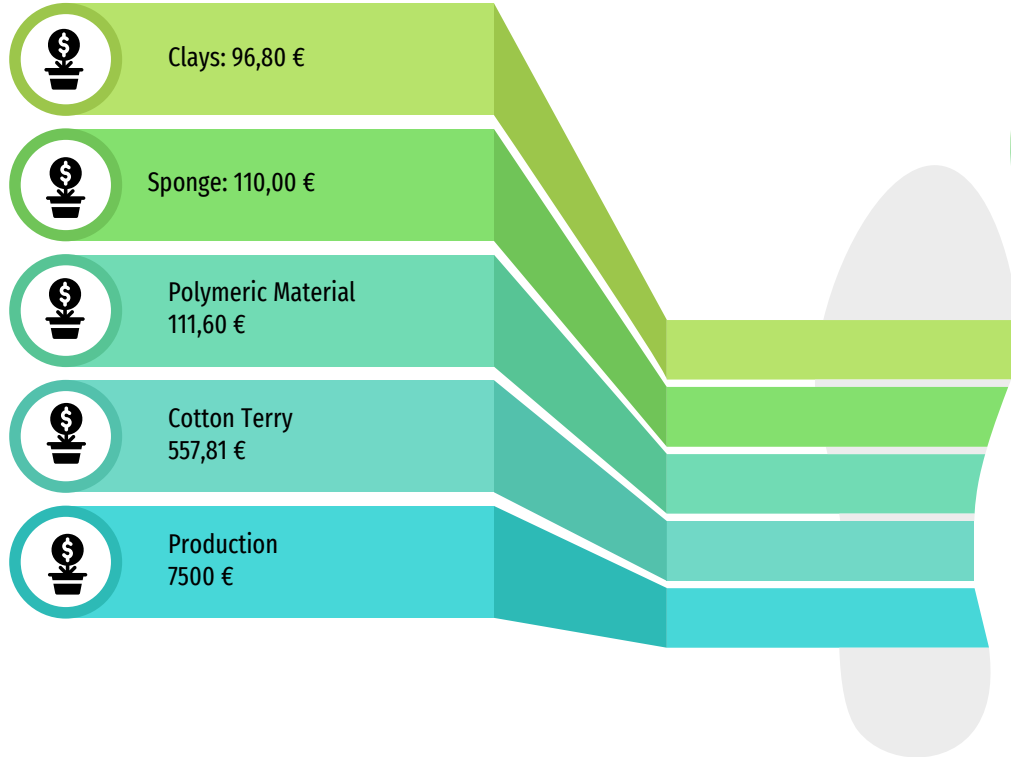
Costs



*Calculated costs for a size
38 EUR: (24,5 x 8,5 cm²)

TOTAL: 3,37 €

Investment, sales and profits



Initial
investment
for 2500
pairs:
8376 €

Sales

1 pair 9€

2 pairs 15€

+ Recycled

- **Stock inicial:** 2500 pairs.
(The rest upon request)

- **Sales channels:**
Retailers,
e-commerce and local
shops.

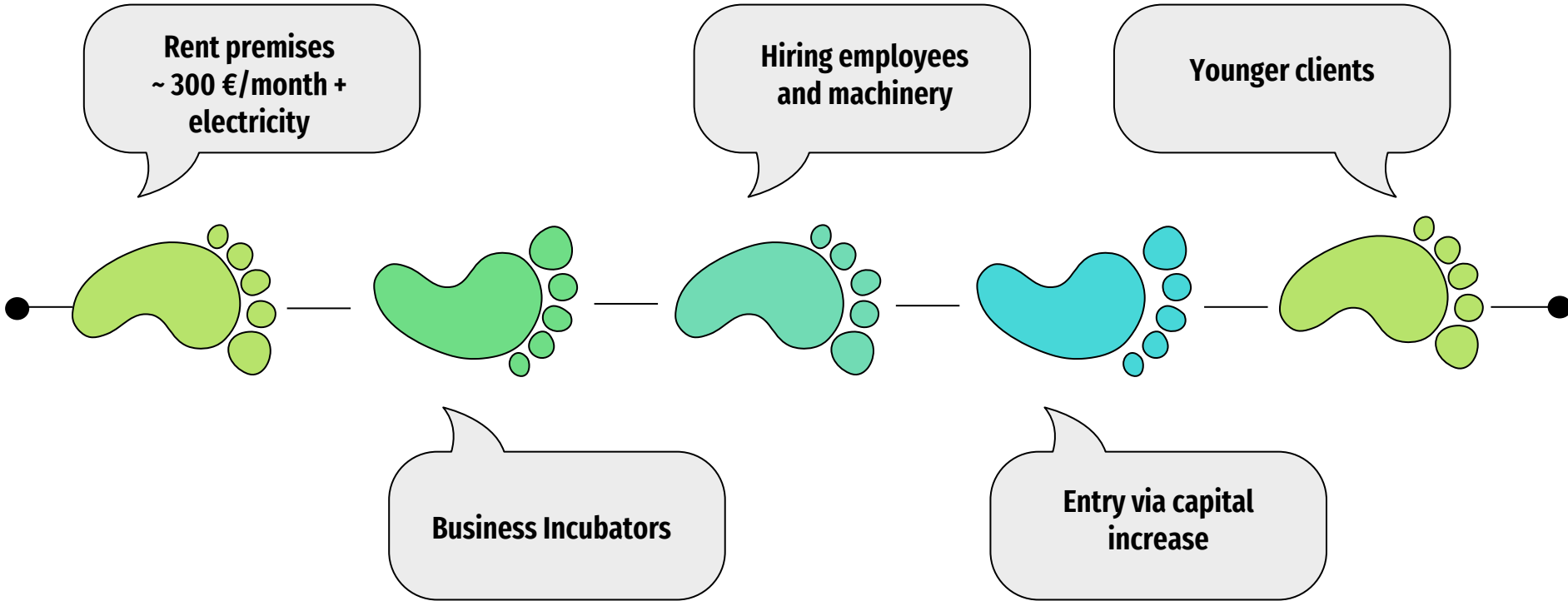
Profits

Per pair: 5,63€ - 4,13€

From the sales of
the initial
investment: 14124€ - 10374€

Number of pairs
sold in order to
recover the initial
investment: 931 - 980

Mid-long term growth



Contact us!



Mail: DryFeetCompany@gmail.com

Phone: 633 407 107/ 686 001 081

Twitter: @DryFeetCompany

Linkedin: DryFeet Company